



FiberMat® Type A uses the patented FiberDec process, a combination of special polymer-modified asphalt emulsion, chopped fiberglass strands and aggregate. This mixture acts as a highly resilient waterproof membrane that effectively bridges alligatored pavements and also delays reflective cracking.

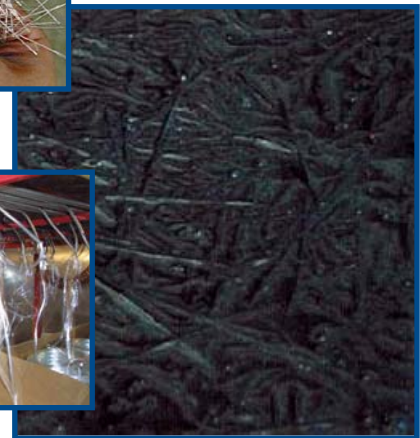
FiberMat® Type A is superior to other surface treatments as there are no adhesion problems and the seal produced has greater tensile strength that resists stresses placed upon it.

FiberMat® Type A is also fast to apply. It can be opened to traffic within about 15 minutes after laying, regardless of temperature or humidity thanks to a controlled breaking system.

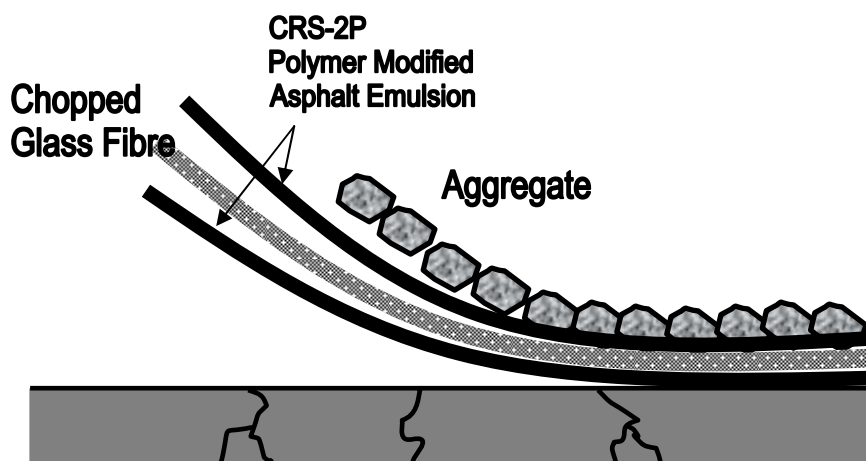
Stress
Absorbing
Membrane

Type A

FiberMat® Type A has sufficient tensile strength and flexibility to absorb movements in the pavement structure and delay the pavement from cracking. The use of a chopped fiber-reinforced membrane was shown to enhance the performance of an overlay by 30% (fatigue and tensile stress) and wheel-track cracking rate by 300%.



APPLICATION



A specially developed unit chops (60-90mm length) glass fibers in-place and sandwiches them between two layers of asphalt emulsion prior to the application of 6.35mm, 9.5mm or 12.5mm size aggregate, or combinations thereof, which is then rolled into the surface. The glass fibers are applied at a rate of approximately 70g per m², depending on the severity of the cracking, and the asphalt emulsion is applied in two simultaneous applications totaling 1.8 to 2.7 litres/m².



Stress
Absorbing
Membrane

TYPE A



**Norjohn Contracting
and Paving Limited**

9101 Brown Road

Niagara Falls, Ontario

L2E 6S5

1-800-370-9912